

• TRUSTED QUALITY SINCE 1921 •
RUST-OLEUM®

MAKE IT YOURS

CREATIVE PAINT IDEAS & INSPIRATION

PAINTED FURNITURE MADE EASY

Expert tips | How tos | Product advice

PAINTING KITCHENS

METALLIC EFFECTS

OUTDOOR PROJECTS

NATURAL EFFECTS

AND MORE...



CHARIS WILLIAMS - TURNING TRASH INTO TREASURE

Chalky Finish Furniture Paint in Duck Egg



MAKE IT YOURS

WELCOME

Hello and welcome to the latest edition of our Make It Yours magazine. Whether you're an upcycler, recycler, or simply enjoy colour in your home, the pages of Make It Yours are jam-packed with creative paint ideas and inspiration. We've given a range of unloved furniture objects (collected from our local charity shops) a new lease of life with Chalky Finish Furniture Paint and shared top tips on how to introduce this year's brightest trend – neons - into your home.

TV salvage expert and designer Charis Williams (AKA The Salvage Sister) joins us to talk about her favourite, and least favourite projects and share her top tips for upcycling trash into treasure. She'll also tell us why she feels the UK has embraced upcycling.

Our monthly Make It Yours competition challenging Rust-Oleum fans to give an object a makeover using our paints has had a phenomenal response and we've showcased some of our favourites on the Competition Winners page. Don't forget, for your chance to win £250 or a runner up prize each month, simply send us a before and after photograph of your project (be sure to capture the paint can in the picture) and upload it to: www.makeityours.co.uk

@MakeItRustoleum





ASK MATT

MATT, our Rust-Oleum master of all paint knowledge, answers your questions. If you have a painting query or question about Rust-Oleum products please visit: www.makeit yours.co.uk

Q When I've used spray paint in the past, the paint runs and drips. How do you prevent this?

Toby, Swindon

MATT says

A It sounds like you are applying too much paint at once, causing it to drip. The key to spray paint is adding little by little. Apply thin, even coats and allow it to dry between each layer to get a drip free, even finish. Nobody is perfect, so if you do get a little drip here and there, simply sand it off with a fine sandpaper and apply a few more coats of spray paint to cover it.

.....
Q: Do you have a spray paint that would be suitable for white goods? I have a scratched, tired-looking washing machine but it works perfectly so I would love to freshen it up rather than buying a new machine.

Claire, Basingstoke

MATT says

Spray painting is the best way to improve the appearance of an old appliance that has been chipped, marked or discoloured over time. It can also be used to match odd appliances, rather than incurring the expense of a new one. Rust-Oleum Appliance Enamel comes in White and Stainless Steel, and will give a smooth, professional finish to your old washing machine.



Q: My chiminea is looking a little worse for wear. The paint has peeled off and it's rusted in patches. I'd like to repaint it, what's the best way to do this?

John, Dartford

MATT says

Rust-Oleum Stove & BBQ paint is heat resistant up to 650°C making it great for chimineas. Available in either black, silver or green it provides both a decorative and protective finish as it also prevents rust. Two light applications should be sufficient to give your chiminea a new lease of life. Be sure to remove any flaky old paint or rust with wire wool before you start.



Q: Our plastic garden furniture is beginning to look really old and shabby. Is there a paint that would tidy it up in time for spring when I will hopefully be spending more time in the garden?

Emily, Stoke

MATT says

We have two options for this project; Direct to Plastic for a White Gloss or Black Gloss finish or Plastic Primer followed by Painter's Touch if a coloured finish is required.



Q I'd like to paint some of my plain wooden toys for my son, but I want to use a paint that is safe and designed for this application. What do you recommend please?

Chris, Leeds

A **MATT says**
Rust-Oleum's Painter's Touch brushing paint range is certified Toy-Safe and perfect for a wide range of small projects and crafts. These water - based paints have been developed to strict European Union EN-71-3 toy safety standards, so you can have complete peace of mind.

Q: Do I you always have to prime my projects?

Elizabeth, Glasgow

MATT says
Although it isn't always necessary, I would recommend using a primer for most projects as you will get better results. Rust-Oleum has brilliant primers that will ensure your projects have a longer lasting sheen and finish. However, Rust-Oleum Universal All Surface spray paint is specifically formulated to work on diverse surfaces including wood, plastic, metal, brick, concrete and vinyl. With this clever spray, there is no need to prime.

Q: How do I prevent my spray paint projects from looking stripy?

Jessica, Newcastle

MATT says
Projects may look a little stripy while you are building your coats of spray paint, simply keep applying layers until the colour evens and the stripes disappear. Be sure you have enough spray paint to cover the entire project then hold the can approximately 30cm away from the surface of the object and spray in a steady back and forth motion, slightly overlapping with each stroke.

For best results, keep the can the same distance from the surface and keep the can in motion.

.....

Q: I have an antique bedroom set which would look great with a shabby chic makeover, but I'm not sure how to achieve this. Are there any products you would recommend?

Sarah, Derry

MATT says
Rust-Oleum Chalky Finish Furniture Paint is perfect for furniture updates and comes in 16 beautiful shades. It dries to a soft, chalky, flat matt finish and even the most inexperienced upcycler will find it easy to apply with long lasting results. It can be applied directly to wood (bare or painted), brick, stone, plaster or any suitably primed rigid surface.

To achieve the shabby chic look, apply multiple layers and sand back to the original material using fine grit sandpaper or wire wool, or combine a couple of colours sanding back the top layer to reveal the colour below. Once dry, you can wax it for extra protection or leave it bare.

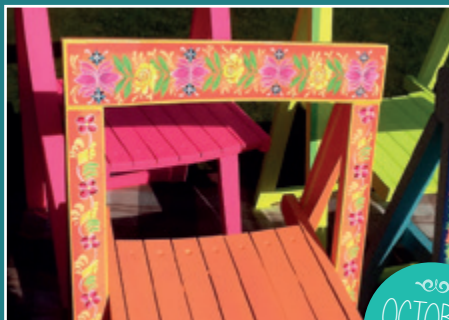


COMPETITION WINNERS

For the past four years, Rust-Oleum has ran a monthly competition offering one of its lucky customers an opportunity to win £250 and 10 runners up a bumper pack of paint. We've been inundated by colourful, creative entries each month and we've picked our favourites from last year.

Tahil Grobbelaar, London

Tahil scooped the top prize of £250 in October for her very colourful set of folding chairs. She totally transformed them with these great floral designs, using a selection of Painter's Touch 20ml brush paints, Neon 250ml yellow and pink and Crystal Clear varnish aerosol to protect and finish the job. Commenting on the chairs, Tahil said "they are a real talking point when I have guests over and I love them so much I even use two as bedside tables".



OCTOBER
WINNER



Sarah Bonnar, Hampshire

In November Sarah won the top £250 prize for her beautifully upcycled dining room table and chairs. She painted her charity shop find in Chalky Finish Furniture Paint in Chalk White and finished it with Furniture Finishing Wax. To complete the look she then reupholstered the chairs with bright funky fabrics. A simple upcycle that has maximum impact!



Ebony Shrub, Lincoln

Ebony came runner up in July with her stylish 1970s set of drawers. She transformed and updated the drawers with Chalky Finish Furniture Paint in Graphite and finished the look with a coat of Furniture Finishing Wax in Clear. The addition of the red rose drawer handles creates a striking contrast against the grey.



JULY
RUNNER-UP

Gemma Cooper, Nottinghamshire

Gemma consistently sends in beautiful upcycling projects using the Chalky Finish Furniture Paint, see her entry below from October last year, where she came runner up. She totally transformed a very old fashioned chair and dining set into a desirable and up to date piece of furniture that anyone would be proud to have in their home. A stunning example of what can be achieved with the Chalky Finish Furniture Paint.



OCTOBER
RUNNER-UP

Lucie Duggan, Birmingham

Lucie came runner up in our June competition, with a creative ladder upcycle. She repurposed a set of tired old step ladders using Chalky Finish Furniture Paint in Winter Grey and Antique White. She then used them to display painted plant pots and jam jars finished in Painter's Touch Duck Egg Blue and Candy Pink. A great accessory for displaying plants and herbs this summer.



JUNE
RUNNER-UP





SALVAGE Sister

CHARIS WILLIAMS TURNING TRASH INTO TREASURE

Artist, designer and TV presenter Charis Williams, AKA the Salvage Sister, first hit our TV screens in 'The New Reclaimers' on UKTVHome where she reclaims excess product from housing developers to transform family homes into havens. More recently you will have seen her on Channel 4's 'Kirstie Allsopp's Fill Your House For Free' where she reclaims and upcycles fantastic bespoke items turning the discarded into the desirable.

Charis uses her eye for colour, pattern, shape, design, her creative flair and self-taught know how to upcycle and recycle everyday items. Rust-Oleum caught up with Charis to find out more about her passion for turning trash into treasure.

I've always been an artistic and creative person. I'm from a working class background and I grew up in a very waste conscious household. Dad was always tinkering with something or painting and Mum was always sewing and making second-hand clothes look fab, I guess it rubbed off!

I much prefer older items that are well made from good quality materials than cheap, new mass-produced items made from poor quality materials that don't last - it's a false economy.

Upcycling is a great way of turning something from undesirable to useful again and totally in-tune with your personal style, it goes hand in hand with reclaiming, skip diving and reuse. Plus, it's great fun working out how you can give something a new purpose and make it beautiful again in a completely unique way.



Pictures of Charis courtesy of Stuart Grimwood.

The UK has certainly embraced upcycling, and for good reason - upcycling saves you money, and you can tailor an item to your taste and decor. It also gives you a great sense of achievement and satisfaction to stand back and say proudly 'I made that'.

I also think we've had enough of poor quality, badly designed new items that are mass-produced, have been shipped half way around the world and aren't built to last. At least when you upcycle an old item you know it has already lived a little, has a story to tell and, most importantly, has plenty of life left in it!

Each year we see different trends influencing the design of our homes. Growing your own fruit and veg has become ever more popular over the last few years and this year will be no exception, so I expect we'll see lots of homemade trellises for vertical veg upcycled from pallets and veg planters constructed from reclaimed decking. Garden upcycling will be making a big splash this spring with sky blues, lime greens and rusty reds. Outdoor artwork and sculptures will be catching our eye too. I don't think there is any getting away from upcycling this year - I see people looking for ever more inventive ways of making discarded items beautiful and useful once again in a whole host of new and exciting ways.



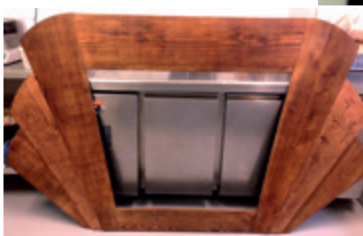
Without a doubt, my most ambitious project to date has been building my workshop. It took me a few months to build on my own and I used only free, unwanted materials I had collected from roadsides, industrial sites, Freegle, Freecycle, The Wood Store's free pile and building sites in less than a 10 mile radius of my home. It was extremely ambitious considering I'm completely self-taught, and I had never even upcycled anything larger than a dining set before!

I set myself the challenge of building it from unwanted materials to highlight the massive amounts of usable materials entering the waste stream and to inspire others to think about using scrap and leftovers too.



I am most proud of a commission I recently completed for a new retro ice-cream parlour in Brighton. I made a bespoke wooden Art Deco style window frame and an usherette inspired mannequin display unit on wheels, both made entirely from salvaged and reclaimed materials - I handcrafted the window frame with wood which at one time had been cladding on a barn.

I also made the usherette's tray and the removable shelves from scratch even her metal base is an industrial floor tile, the kind they use in offices under the carpet. I used copper leaf on both and gave them a rustic finish to age them and fit with the theme.



MAKE IT YOURS



'Clockwork Orange' mannequin lamp - replica of one shown on C4.

I love coming up with creative ways of designing and fabricating items to be original and eye-catching, yet functional. I love being quirky and original, and using bold colours - creating something contemporary out of a few discarded, beaten up old items is the epitome of upcycling for me. I have a thing for mannequins and I've made many items from them including a 'Clockwork Orange' lamp which I made on the first series of 'Kirstie's Fill Your House for Free' from an old broken mannequin bust, a vintage bowler hat and the inners of an old shade. I have created wall hung candle holders and floor standing lamps from mannequins too, they're so versatile and fun to work with.



People often ask me for my top upcycling tips and I always say start by looking around your home for inspiration. I'm sure most people will have an item at home which needs some TLC, something which they have long been meaning to replace but for some reason it hasn't made it out of the front door yet. This is a great place to start - you don't like it as it is so what's the worst that could happen?! Start small, you can always build your confidence by starting with a lick of paint or changing knobs and handles. I'm sure you'll be bitten by the upcycling bug and before long you'll be skip diving, have a cupboard dedicated to cans of paint and a well-stocked tool box! There are loads of tips and tricks on my website - www.salvagesister.co.uk. Check out my 'How-to' videos for step by step help and follow me on Instagram, Twitter, Facebook and Pinterest for more help and inspiration - the world is your oyster!



SPECIAL FEATURE

OLD FURNITURE, REIMAGINED

Tired of the same old interior styles and designs? Adding colour to your home doesn't mean simply painting the walls, instead breathe new life into old furniture with a lick of paint and join the rest of the nation in the upcycling revolution.

It's easy to overlook the sad, tired pieces of furniture which lurk in the corner of forgotten rooms, garages, second hand shops and charity sales. But, don't discount the crumbling armoires and wonky desks that sit dusty and desolate - they aren't a completely lost cause. With a lick of a paint and a bit of imagination, you could fill your home with bespoke items tailored to the colour scheme of your dreams.

Unleash your inner designer and spruce up a soulless stool or woeful wardrobe with

Rust-Oleum's Chalky Finish Furniture Paint range. Available in a range of 16 beautiful shades it dries to a soft, chalky, flat matt finish and is easy to apply. Whether you're an experienced upcycler or a first-timer, this easy-to-use product produces lasting results and can be applied directly to wood (bare or painted), brick, stone, plaster or any suitably primed rigid surface.

Right: Combining shades of grey can create cool sophistication in any room. For an added layer of chic, we've included a photographic backboard to this telephone stand using pretty wrapping paper. Desk painted in Chalky Finish Furniture Paint in Anthracite and Graphite.

MAKE IT YOURS

Whether your style is bold and bright or soft and subtle, there is something exciting and satisfying about finding an old piece of furniture for not much money, seeing its potential and renovating it to look lovely in your home.

To show you just how easy it is to get creative with furniture paint, we visited our local charity shops and second hand shops in search of upcycling projects. Armed with little more than a brush, pots of our favourite Chalky Finish Furniture Paint and a splash of imagination, we'll show you just how easy it is to reinvent an old piece of furniture.



BEFORE



Once you've found your furniture, the first step is to decide whether you want a block colour finish or a designer paint effect. For a beautiful, vibrant effect use contrasting paint colours as we have with this damaged set of draws.

AFTER



Above: The dark wood and missing handle meant these drawers were left unloved, but we knew exactly what to do to give it a new lease of life.

Left: A fresh shade of green paired with bright gold detailing and new handles made these drawers ready to take pride of place in any home.

MAKE IT YOURS

PAINTED FURNITURE

Our original set of drawers was missing one handle, but we were easily able to find a matching pair of replacements in a local DIY store. We painted the front and sides of each drawer, and the housing in Chalky Finish Furniture Paint in Sage Green which we painted directly onto the existing varnish. We then painted the inner panels of the draws with a darker green, Chalky Finish Furniture Paint in Bramwell, to add depth.



Left: No preparation or distressing was needed to create our drawers, we simply applied the Chalky Finish Furniture and let it dry.



Using a small artist's brush, we glammed up the legs by highlighting the existing detailing with Rust-Oleum Painter's Touch Brush Paint 20ml (available from B&Q and Homebase) in Gold. This instantly gave the drawers a chic, lavish appearance while at the same time, creating a striking focal point on the furniture.



BEFORE



Grey is the new neutral, fast overtaking cream as the colour of choice for room overhauls. It's the perfect background colour against which to present almost every shade of the rainbow, and works a treat with bright accents in furniture and accessories. We transformed this shabby antique cabinet with Rust-Oleum Chalky Finish Furniture Paint in Winter Grey for the outer panels and injected a pop of colour with Chalky Finish Furniture Paint in Belgrave on the back, slightly distressing the outer frame to maintain authenticity. The use of painter's masking tape is key with this project, or any similar where a clear edge is needed. Make sure to take time to prepare and cover the edges of the glass panels closest to where you'll be painting – then be patient and wait for the paint to dry properly before removing.



MAKE IT YOURS

PAINTED FURNITURE



Left: The clean, cool grey colour (Chalky Finish Furniture Paint in Winter Grey) provides the perfect back drop for the rich shade of Chalky Finish Furniture Paint in Belgrave, making the frame stand out boldly, while remaining understated.

Below: This charity shop find was instantly transformed from dull and unloved to quirky fashionable furniture with a little TLC. We replaced the old handle with a new one picked up from a DIY store to add an extra element of style.

AFTER





BEFORE



Colour affects our moods and can instantly uplift our home or, just as easily, have the opposite effect. For our next project, we've added a splash of yellow to a previously dark dresser as a quick and easy way to inject sunshine into any room.

Yellow is probably one of the most underrated colours in interior design, and people often overlook how it can add warmth and excitement to your interiors when used correctly. So, don't be scared to add a summer glow to your home with upcycled vintage furniture.

We brightened the exterior of this second hand dressing table with Chalky Finish Furniture Paint in Mustard, replacing every trace of dark, moody brown with sunny bright tones. We then painted the inner drawers with Chalky Finish Furniture Paint in Salmon for added warmth and interest.



MAKE IT YOURS



Left: We removed the chunky dark handles and replaced them with modern glass knobs (again, picked up from our local DIY store, but you may also be able to find them at a second hand shop). Chalky Finish Furniture Paint can be applied directly to the furniture; when painting over a dark colour with a light shade, two coats may be needed for complete coverage - two thin coats are better than one thick one. Just let each layer dry fully before applying the next as this makes for a tougher finish.

AFTER



Left: Now complete, this piece looks like it could take pride of place in a catalogue, a beautiful addition to any bedroom. The dresser which previously looked dark and uninviting now lifts the room and would look even more beautiful when dressed with trinkets such as perfume bottles and jewellery boxes.



BEFORE



Burnt orange, sandy tan and rich earthy tones of sepia and baked clay are the perfect shades for travel themed interiors, capturing the sun-scorched feel of the desert. Update a second hand find and pair with Moroccan lamps, plump cushions and decorative throws to create a luxurious atmosphere.

We painted this tired table with Chalky Finish Furniture Paint in Fire Brick, instantly transforming it from a charity shop reject to an item collected from a far flung destination. When placed in a room, it will give new character to a plain landscape.

Different effects can be achieved simply by varying your brush strokes – for a clean, neat finish, apply brush strokes in one direction over two coats or for a textured finish paint in every direction over both coats. Don't forget to get your paint brush into each nook and cranny to make sure all corners are painted.

MAKE IT YOURS

An on-trend shabby chic look can be achieved by applying multiple layers of paint and then using a fine grit sandpaper or wire wool to give areas of the painted item a worn and distressed look.

After painting we applied Rust-Oleum Furniture Finishing Wax (optional). This clear, water-repellent wax gives a soft lustre to the finished piece of furniture whilst adding a protective layer – perfect for a well-used table.

Above: To achieve a smooth look, we painted with the grain of the wood. Make sure you paint in all corners and hard to reach places first as you'll be able to smooth over these areas with your brush strokes later.

Right: Our finished table in Chalky Finish Furniture Paint in Fire Brick provides a warm welcome in any room, contrasting perfectly with a cool white wall. Alternatively, to achieve a cooling effect with your furniture, why not try Chalky Finish Furniture Paint in either Dusky Pink or Duck Egg – for the full range of colours, please visit www.makeityours.co.uk

PAINTED FURNITURE



AFTER





AFTER

MAKE IT YOURS



BEFORE

Above: Although our wardrobe was made of great quality wood, its dark colour had made it look dated.

There is no doubt that retro trends in furniture are back in a big way, making second hand finds a vital part of your interior décor. As styles don't come back in the same exact materials, or colours, you are one coat of paint away from owning a seriously stylish piece of furniture.

We gave this vintage wardrobe a modern retro twist with bright colours choosing Chalky Finish Furniture Paint in Duck Egg for the outer surface of the wardrobe paired with Cocoa from the same range for the interior, a striking duo of colours.

Left: We removed the original handles and lock features and sprayed these with Painter's Touch Spray Paint in White Gloss, re-attaching them when dry.



HOW-TO

CREATE SHABBY CHIC STYLE FURNITURE

What you will need:

- Rust-Oleum Chalky Finish Furniture Paint
- Rust-Oleum Furniture Finishing Wax
- Dustsheets and newspapers
- Sandpaper / sanding block
- Cloth for dusting / cleaning your object
- Cloth for waxing / buffing
- Paint brushes
- Stir sticks



1. Before you get started make sure the surface of the item you're painting is dry and free from any contaminants such as dust, oil or wax. Use a damp cloth over the surfaces that you are going to paint to pick up any dust and a towel to dry it off.

Remember to always read the instructions on the back of the can before you start.



2. Give the paint a really good stir before application and then simply apply the paint with a brush or a roller depending on the item you're painting. For furniture with a lot of detail, a good quality paint brush is recommended to ensure you reach into any mouldings and cut outs.



3. Apply the paint evenly, for a smoother finish try to keep your brush strokes in the same direction. If you want a solid finish, you will probably need two or three coats, but for a finish that you want to distress and sand back you will need fewer. Leave four hours between coats to ensure the paint is fully dry.



4. Once your item is dry you can begin to spot sand some of the detail, this will achieve a 'distressed' vintage feel. For this you can use sandpaper, a sanding block or a wire scourer. For the best outcome start off on corners and edges and work from there. Remember to keep standing back from the item to ensure you are happy with the developing effect.



5. Once you are happy with the outcome it is time to apply Rust-Oleum Furniture Finishing Wax, which protects the paint finish. Take an old rag or paint brush and work the wax into the paint a little at a time. Leave this to dry for 10 minutes then buff the surface with a clean, dry cloth to remove any excess wax. This will take 15 minutes to dry fully.

For an alternative technique, you can use two contrasting colours on your object. For instance, use Anthracite for the first two coats, followed by a Winter Grey top coat. Then lightly sand the areas of the topcoat back with sand paper to reveal the lighter colour underneath. You can wet sand or scour to reveal the first paint colour, or after the first coat has dried you might want to apply a little wax to some areas before you apply the second colour, resulting in the topcoat not adhering to the waxed areas. This effect looks fantastic on objects with intricate carved details and really makes your furniture unique.



HOW-TO

SPRAY PAINT

If you've never used spray paint before, don't worry - it's far easier than you think. Just follow these simple instructions from the experts at Rust-Oleum and you'll be up and running in no time.



MAKE IT YOURS



1.

Before you begin, make sure you're in a well ventilated area. After reading the application instructions begin shaking the can for the stated amount of time. For most spray paints it is recommended you begin counting time once the can makes a noticeable rattling sound.



2.

Put some old newspaper down and practice your spraying technique. Note that if you go too fast or leave the can pointing at one spot too long, you'll get uneven gloss. Practice spraying in slightly overlapping stripes.



3.

Carefully prepare the object ensuring it is clean and dry. Prime where necessary. Test the paint on an inconspicuous area of the object to be painted to ensure colour compatibility. Use a specialist primer as necessary.



4.

Carefully mask any areas of the object not to be painted. Apply the paint quickly at the recommended spraying distance, alternating between moving the can from left to right and up and down. Pause to shake the can at regular intervals during painting. Be sure to slightly overlap on each stroke to prevent striping. Apply several thin coats and allow to dry for the stated time before recoating.



NATURAL FINISHES

Bring the beauty of the great outdoors inside your home with our nature-inspired finishes, which are both quick and easy to produce.



Create a romantic space in any room with a clever use of natural shades. Bath painted in Natural Effects Cast Iron.

MAKE IT YOURS



and textures. Rust-Oleum Textured spray paints will instantly transform items made from wood, metal, plastic, concrete and more with a rich, textured finish by simultaneously mixing a range of natural colours from a single can to give an authentic multi-layered look.

Large items look fantastic once updated with a natural shade and when chosen correctly, a colour can create a dramatic and seductive atmosphere, adding moody depth to a room. We revamped a classic roll top bath with Rust-Oleum Natural Effects in Cast Iron, a beautiful deep natural shade which transformed a plain and boring bathroom into something which would look right at home in a romantic set for the silver screen. Now all that's needed is candle light and a glass of bubbly to complete the scene, bliss.



Textured Aged Iron

Natural finishes and textures are incredibly versatile and can be used to freshen up gardens, overhaul interior décor by adding dramatic character, or even soften a minimalistic room. Incorporate natural shades and textures into the home with Rust-Oleum spray paints.



Make home accessories stand out from the crowd by customising bargain buys with a lick of Rust-Oleum Natural Effects, Textured or Stone spray paint. With these clever sprays you can create the look and feel of up to 12 natural finishes including cast iron, bronze, terracotta or limestone - no one will know your secret.

In just a few minutes, plain trinket dishes, old tins or plant pots can be revamped and updated with an extensive range of colours



Natural Effects Limestone





Spray paint is the smartest option when creating a textured effect as it produces a seamless finish with a few simple strokes of the can. With Rust-Oleum Stone or Textured sprays, items can be completely transformed with a whole new look and feel. The paint is lightly textured to replicate the feel of natural materials, instantly giving home décor a natural glow. It's not just accessories which

can be transformed with a textured spray. Damaged, chipped and unsightly items can be brought back to life and modernised with Rust-Oleum Stone effect spray paint. Designed for most surfaces including wood, metal, plaster, clay and unglazed ceramic, this spray creates the natural look and texture of real stone. Choose from Black Granite, Mineral Brown, Pebble or Bleached Stone to transform your home.

Stone Bleached Stone



Above: Plain white, porcelain vases were sprayed with Natural Effects Limestone customising them to match the surrounding interiors and help them stand out from the crowd. Now when the relatives visit, they won't be able to say "we have that exact same one!"

Left: We took a plain wooden fire surround and sprayed it with Rust-Oleum Stone effect spray paint in Bleached Stone to create the look of an expensive stone fireplace (minus the giant price tag).

When it comes to garden accessories and ornaments, Rust-Oleum Stone* or Textured sprays can hide a multitude of sins, year after year. When ornaments, pots and statues become weather beaten or grubby, a quick coating of Textured spray paint can make them look as good as new whilst blending perfectly with the natural surroundings of your garden.

With a textured or natural spray to cover almost any surface, it's quick and easy to update either interior or exterior décor, so search your home for items that need a little TLC and don't be afraid to scour charity shops for discarded accessories. With a little imagination and an eye for potential, your home could be filled with natural accessories that inject warmth, texture and most of all creativity into your space.



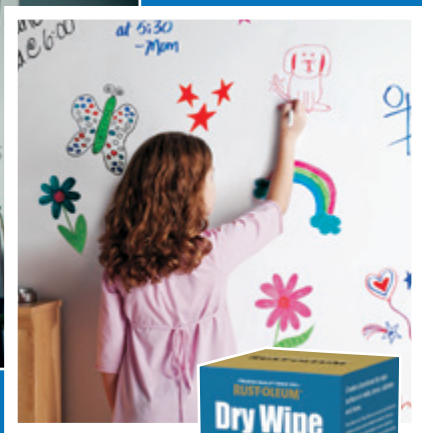
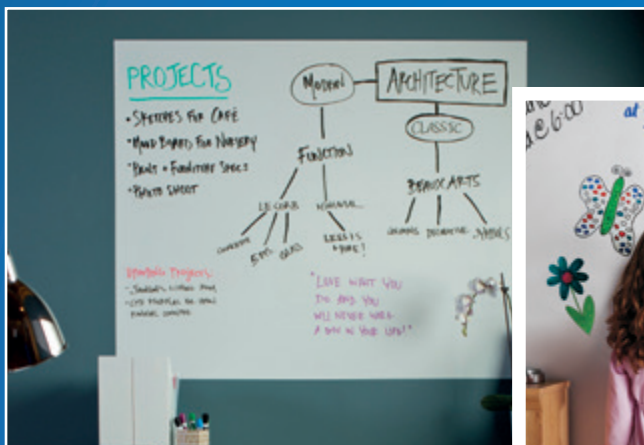
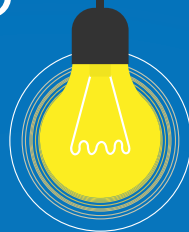
Below: Candle stick painted in Textured Deep Forest, horse ornament painted in Natural Effects Limestone, lamp base painted in Textured Desert Bisque and rabbit garden ornament painted in Textured Autumn Brown.

** If using Rust-Oleum Stone on outdoor objects, seal with Rust-Oleum Crystal Clear before placing outside.*



BRIGHT IDEAS

Sprucing up your home has never been simpler. Give ageing appliances a new lease of life, add unique fun features to family rooms and neaten up nicks and niggles around the home - with Rust-Oleum paint, the options are endless!



CREATE A DRY WIPE WALL

For a space to let your creativity run wild, add a dry-wipe wall to your office or child's room. Our Rust-Oleum Dry Wipe Paint creates an erasable surface for all your quick sketches and weekly schedules. When you're done, simply wipe and repeat!



SPRAY PAINT A FRIDGE

A fridge door is the most used door in a home but if your favourite appliance is looking a little sad, there's no need to find a pricey replacement. These hard-working food-filled friends can be updated with a few light coats of Rust-Oleum Appliance Enamel. Choose the slick stainless steel effect or opt for white gloss to add a like-new shine to the surface.

MAKE IT YOURS



SPRAY PAINT WICKER FURNITURE

Wicker furniture kept outside can soon become weather-worn. Update wicker furniture using Rust-Oleum Painter's Touch or Universal spray paint to cover every hard-to-reach nook and cranny, leaving you with furniture that looks as good as new.



CREATE AN ANTI-SLIP SURFACE

Got a polished or slippery surface that invites trips and falls? Create a clear, aggregated surface on garden paths, steps and tiles to prevent slips using Rust-Oleum Anti-Slip Coating.



CREATE A MAGNETIC WALL

Looking for ways to keep your little one's room organised? Magnetise a plain wall to create more room for activities using Rust-Oleum Magnetic Primer. Simply apply, leave to dry and paint over with a colour of your choice for a surface that's bound to attract attention.



SPRAY PAINT A RADIATOR

Radiators can become an eyesore if they discolour and scratch over the years. To combat this, a freshened-up finish can be achieved quickly and easily with our heat resistant Radiator Enamel paint. Choose from Chrome, Silver, Cast Iron, White and Heirloom White.



MAKE IT POP

Whether you're wanting to introduce pop art bright colours into your home to brighten up a winter's day, or simply add a fun flash of colour, design enthusiasts are increasingly using neon furniture to make one or two bold statements that infuse a space with colour.

Neons make a great statement when combined with neutrals – for example, neon colours pop when against a grey wall or colour scheme. Consider starting with a strong statement or two, such as the above set of drawers created with Rust-Oleum Neon paint, then expanding your neon palette while making sure it doesn't overwhelm your space. However, at the same time, a collection of neon vases or ceramics on a shelf top can make an unforgettable display!

Rust-Oleum's Neon paint range is available in bright pink, yellow or green in either spray or brush paint. It's suitable for painting directly onto wood, metal, ceramic and more, and is certified Toy Safe.

MAKE IT YOURS



PERFECTLY FRAMED



A wall of creatively arranged frames is a quick and easy and can complete a room. With a little DIY and interior know-how, there's no need to buy new frames to achieve the look, simply update existing or outdated frames in

your home and look out for second-hand picture frames you can spray paint to match.

Rust-Oleum Painter's Touch comes in 42 different finishes so you can easily revive frames and match them to the tones of your room. Once complete, fill your frames with family pictures or stylish prints to add instant artwork to your walls.





HOME IDEAS



GET CREATIVE WITH CHALKBOARDS

Go back to the drawing board with the latest trend to hit homes. Whatever the purpose, creating your own chalkboard home accessory is as easy as child's play with Rust-Oleum Chalkboard Paint, available in both spray and brush paint.

Chalkboards don't have to be restricted to playground hopscotch. Paint walls, furniture and accessories to turn the surface into the ideal noughts and crosses battlefield. For covering larger areas or painting an area where spray paint can't be used, we have a range of brush-applied chalkboard paints in black, blue, red and pink. Give your children the space to design towns and planets by covering a playroom wall with Chalkboard Paint, creating a truly unique feature that will never seem dull.

MAKE IT YOURS



It doesn't have to just be restricted to children's rooms either. Spray glass storage jars with Chalkboard Paint for a modern twist to kitchen storage, or create your own family organiser by spraying a thin piece of MDF and adding an ornate frame to the outer edges. Hang it on the wall or keep it in the study to make sure a dentist trip is never forgotten again.

For a piece of decorative furniture that provides the perfect mix of practicality and storage, layer a few coats of chalkboard paint onto a set of drawers. Label the front of each drawer with what it contains, doodle a vintage floral design on the cabinet or use it to occupy the children when working from home.

Or, for an extra special chalkboard area, why not try Rust-Oleum Magnetic Chalkboard Paint to create a scratch resistant finish that allows you to create a writeable / wipeable chalkboard surface that attracts magnets.





SOME LIKE IT HOT

Summer, winter, whatever the time of year, it's important we Brits keep our chimineas and BBQ's looking spick and span in case a sudden ray of sunshine appears. But, the unpredictable British weather often leaves our outdoor cooking and heating objects lying untouched for most of the year while we watch them get weather-beaten from the other side of the window.



With Rust-Oleum, relax in the knowledge that it's quick and simple to update battered BBQ's and sad stoves into summer-ready, stand-out features in any garden. Neaten the exterior of any metal patio heater, garden cooker or chiminea with Rust-Oleum Stove and BBQ paint, available in brush or spray. This fast-drying solution, suitable for indoor or outdoor use, offers a heat-resistant finish that will make the exterior look spick and span.

MAKE IT YOURS



After a quick lick of paint in Silver, Green or Black, outdoor essentials are given a new lease of life, so families will be proud to huddle around the chiminea with a mug of hot chocolate, or host a BBQ with friends.

This durable paint also provides rust protection to help keep the surface safe no matter what the weather forecast may bring. This product will withstand heats of up to 650°C and retains its fresh colour without corroding.

Now all that's left to do is sit back, relax and wait for the warmer weather to arrive.



Stove & BBQ Paint Silver



Stove & BBQ Paint Green

Metallic Bright Gold



MAKE IT YOURS



METALLIC EFFECTS

PRECIOUS METAL



Whether you want to bring shine, opulence or a touch of the unusual to your home, there's a metal for you in Rust-Oleum's range of Metallic spray and brush paints, perfectly suited to paint even the fiddliest of objects.

Metallics look fantastic both outdoors and indoors taking centre stage in our homes and gardens: from bikes to plant pots, wallpaper to flooring, appliances to furniture and shimmery fabrics, if you want to add a touch of glamour, achieve an industrial look or create regality in a space, metallics turn a space from good to great.

From warm gold, brass, and copper accents to the cool chrome, nickel and even coloured metallic applications, there is no doubting metals are here to stay! But bringing the bling into your home or garden doesn't need a luxurious price tag - if you've been trying to find ways to bring these colourful metals into your home, read on for some great ideas.

Whatever the season, warm copper is simply beautiful. Whether incorporated through subtle accessories or used as a statement with larger pieces of furniture, copper is the answer to creating a warm aesthetic. Adorn anything from vases to lanterns with our Metallic Copper or Metallic Bright Copper to instantly add a touch of luxe and glamour to your room.



Metallic Gold



Metallic Silver



Metallic Bright Gold



METALLIC EFFECTS

Polished and paired with other sleek finishes like stainless steel and lacquer, metallics work perfectly in modern or contemporary rooms. When paired with natural finishes, metallic accents will create a more rustic, casual room, while a shimmering gold or silver finish immediately adds elegance and formality.

Silver and Chrome is brighter and sleeker yet equally luxurious. This malleable metallic option transitions well to almost any design, enhancing sophistication, class and grace. From door handles to curtain rails, Rust-Oleum's shades of silver instantly make a room look more modern.

For those who aren't afraid to make a statement, our range of Coloured Metallic spray paints are sure to make your home pop. Available in an electric Blue or shocking Pink these sprays are guaranteed to incorporate playfulness and add interest to what could be an otherwise boring piece of furniture.



Coloured Metallic Pink

Coloured Metallic Blue



We're no stranger to a rosy hue in our homes, pastels are pretty and corals feel tropical, but if you are in the mood for something a little wilder, shocking metallic pink is the only way to go. Paint the frame of a large

gilded mirror in metallic pink then set it against monochrome for top style points or paint the legs of a kitchen breakfast stool to create a vibrant makeover with easy DIY.

Electric blue is a strong colour for interiors and our bright metallic shade is no exception. It makes a room stand out and can be used to create a clean statement, accentuate a focus wall or jazz up accessories. Why not break up grey walls, neutral linen or wooden furniture by painting an item of furniture blue, then dot matching accessories throughout.



MAKE IT YOURS



PAINTING KITCHENS

Looking to reinvent a lacklustre kitchen space? Update existing kitchen cupboards and drawer fronts with Rust-Oleum spray paint – it's quick, easy, costs far less than a new kitchen and gives it an instant uplift in your favourite shade.

If it's the ultra-modern look you're after, Rust-Oleum Mode Ultra High Gloss is available in 12 colours and can be sprayed onto wood, MDF, melamine and more, giving you the highly sought after, polished designer finish without the designer price tag. Or for a satin or gloss finish, Rust-Oleum Universal will adhere to any surface without the need for primer, saving you time and money.

The devil is in the detail, so spray paint handles and accessories in a contrasting colour with Rust-Oleum Universal in titanium silver for a hard-wearing metallic effect that is timeless. Tired and scratched appliances can be refreshed too with Rust-Oleum Appliance Enamel, available in white and stainless steel for a smooth, washable surface.



PAINTING TOYS



Thrown, dropped, beaten and eaten – the life of your child's favourite toy can be tough! It's no wonder they can soon start to look tired and worn with paint chipped or fading.

Train painted in
Painter's Touch
20ml Sea Blue.

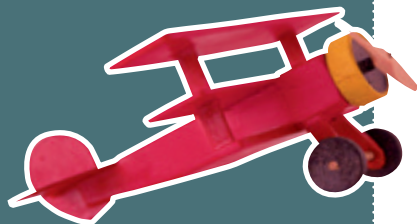


Why not give these favourite playthings a new lease of life with a lick of paint – they'll be good as new in no time! We've developed our Painter's Touch range of paints to strict European Union EN-71-3 toy safety standards meaning they are safe to use on a wide range of children's toys and furniture.

For peace of mind, all Rust-Oleum Painter's Touch brush paints and 150ml spray paints are certified Toy Safe as are Rust-Oleum's Clear Sealer (a protective coating perfect for wood, metal, most plastics and paper), Neon Glitter and Glow In The Dark paints.

To make sure toys are looking their best, simply:

- Clean and prepare the surface ready for painting, either by sanding down any existing paintwork or priming any bare wood or metal.
- Use Rust-Oleum Surface Primer 150ml spray (also certified Toy Safe) if needed.
- Choose your preferred colour and give your treasured object a new lease of life.



MAKE IT YOURS



Wedding

IDEAS

As everyone knows, weddings are expensive. But, by taking the time to consider some simple DIY décor solutions, you could have much more cash to flash on your honeymoon.

By using a little imagination and spending a few hours crafting, anyone can create beautiful personalised wedding decorations which show individuality. From personalised glasses and wedding favours to beautiful yet inexpensive centre pieces, the possibilities are endless. Style a serving dish with an array of candles, jars and bottles sprayed with Rust-Oleum Metallic sprays for a vintage-themed centrepiece, or use the same formula to spray long branches and twigs. Adorn with jewels, trinkets and wildflowers then place them inside sprayed bottles for a truly unique setting, straight out of the pages of a lifestyle magazine.



For functionality, why not create table settings using Rust-Oleum Chalkboard Paint. Simply back empty picture frames, or perhaps a picturesque doorframe, with a Chalkboard 'canvas' to create the message of your choice.

OUTDOOR IDEAS

The British Summer, short and sweet as it may be, is the perfect opportunity for al fresco dining or generally lounging in the sun. But if your furniture is looking a little beaten after a harsh winter outside or clamouring for space in the shed, don't throw it away – instead, give it a new lease of life with a lick of paint



MAKE IT YOURS

Each year green-fingered gardeners spend hundreds of pounds on new furniture and accessories to return gardens to their summer glory. But, more often than not, items just need a little TLC to make them bright and beautiful again.



Spray paint is great for painting weather-beaten wooden, wicker and metal garden furniture because it gets into those really difficult to reach places that conventional

brush paints can't. We updated an old wicker chair and gave it a striking new look with Rust-Oleum Universal spray paint in Sunset Orange - simply choose your favourite shade and spray.

With just a little primer and some spray paint you can turn a plain old plant pots and watering cans into a brightly coloured accessories that complement the colours in your garden. Try using bright, feel-good, colours to give all your garden a happy sunshine feel – both Rust-Oleum's Universal and Painter's Touch spray paints are great for outdoor projects and are available in an array of bright colours.

An outdoor lantern, whether suspended from a border hook or placed on an outdoor table, is a popular accessory that can add colour to your garden or patio – great for al fresco dining whether at home or camping. By



adding a splash of colour you can make them your own. Not only do they look great, the spray paint will also protect them from rust if they are left outdoors overnight. With Rust-Oleum, items that previously looked tired and unloved will look good as new, transforming your garden into a perfect paradise.



• TRUSTED QUALITY SINCE 1921 •
RUST-OLEUM®

MAKE IT YOURS

and WIN great prizes!

Every month until the end of **December 2016** we're offering our customers an opportunity to win **£250**. To be in with a chance of winning all you need to do is send us a "before" & "after" photograph of a project painted with **Rust-Oleum** brush or spray paint. Where possible, include the can of paint in the photograph and each month our panel of judges will select the most original and creative projects. The winning project will win **£250** and ten runners up will each receive a bumper pack of **Rust-Oleum** paints.

To enter simply visit www.makeityours.co.uk and follow the "**Make It Yours**" competition link. For more inspiration on what you could paint to enter the competition, visit our website for hundreds of ideas and tutorials.

See website for competition rules and full terms and conditions. Entrants must be 18 or over. Competition runs until the 31st December 2016. Submitted projects must involve the use of Rust-Oleum paints. One cash prize of £250 is offered per month. 10 runners up prizes of six 400ml cans of Rust-Oleum spray paint - no cash alternative. Promoter: Tor Coatings Ltd., DH3 2RE, UK.

**FIRST
£250
PRIZE**





Fall in love with your furniture again

With a beautiful colour palette and soft velvety-matt feel, Rust-Oleum Chalky Finish Furniture Paint is perfect for updating the appearance of furniture new and old. Apply directly to furniture in one easy application. Create a vintage look by spot sanding and add a soft protective finish with Rust-Oleum Furniture Finishing Wax. For more information, project ideas, how-tos and stockists visit our website.

www.makeityours.co.uk



• TRUSTED QUALITY SINCE 1921 •
RUST-OLEUM®
Make it yours



• TRUSTED QUALITY SINCE 1921 •

RUST-OLEUM®

MAKE IT YOURS



With Rust-Oleum paints and sprays, you can transform pretty much anything quickly and easily. And with a huge choice of colours and effects, the possibilities are endless. So if you want to make something go from drab to fab, make it yours today.

makeityours.co.uk

